

QUICK REFERENCE GUIDE

WELCOME TO DISH NETWORK



FAST TIPS FOR:

- ▶ Operating your satellite receiver
- ▶ Finding your favorite programs
- ▶ Recording programs
- ▶ Answers to common questions

DISH **PLAYER-DVR**

Digital Video Recorder

Dual-Tuner Receiver



Features of Your Remote Control

To use the features described in this section, make sure you are in **SAT mode** by pressing the **SAT Mode button**

Note: To control a TV, VCR, or other available component, the remote must be programmed. See the User's Guide for details.

SAT Mode

In this mode, you can control your satellite receiver, TV power, volume and mute

TV Mode

In this mode, you can control your TV

VCR Mode

In this mode, you can control your VCR

AUX Mode

In this mode, you can control other programmed components such as a DVD player

Receiver Power & TV Power Top button turns the receiver on/off, **bottom button** turns the TV on/off

Receiver Menu
Access features and settings in your satellite receiver

Themes Button
Search for programs using Themes

Recall Button
Go back to last channel viewed

Digital Video Recorder (DVR) Buttons
Pause live TV and play or record programming

Picture-In-Picture (PIP) Buttons
When your receiver is in **Single Mode**, these buttons allow you to watch two separate programs at once (see *User's Guide* for more details)

Format Button
Formats the picture to the desired width to match the program you are viewing (HD receivers only)

Program Guide
Displays an on-screen guide of current and up to 9 days of future program listings with information

Arrows/Select Buttons
Channel up/down, navigate through menus/guides and select a desired option

Browse Button
See what is on other channels while watching TV

View Satellite Program
Exit out of any menu/guide and go back to watching a program

DISH Button
Explore dish home Interactive TV features

Number Buttons
Enter a desired channel number, or navigate through menus

Search Button
Search for a program

Remote Identifier
Green and number 1 indicates TV1
Blue and number 2 indicates TV2



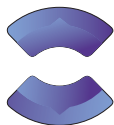
Finding Programs On Satellite TV

Make sure your remote is in SAT mode by pressing the SAT Mode button



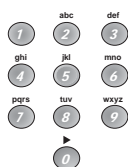
Three easy ways to find the program you want to watch

1. Use the ARROW UP/DOWN buttons to change the channel Up or Down one channel at a time



OR

2. Use the Number buttons to enter desired channel number



OR

3. Use the GUIDE button to display the Program Guide



The Program Guide allows you to see current and future program listings.

Then...



Use the ARROW or PAGE UP/DOWN buttons to highlight a desired program and press the SELECT button



Note: If you select a program that is not currently broadcasting, you will have the option to set up a DVR recording or timer.

Pressing the GUIDE button repeatedly will cycle through your Favorites Lists (see *User's Guide*).



SKIP
FWD

TIP: To skip ahead 24 hours in the Program Guide, use the SKIP FWD button. To back up 24 hours, press the SKIP BACK button.

SKIP
BACK

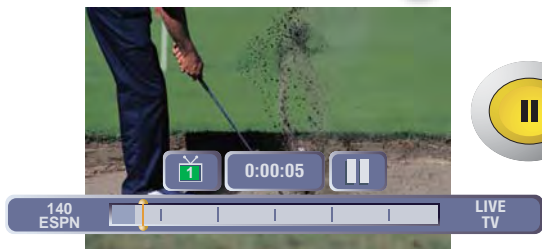


How your channels are organized in the Program Guide:

100-199 Entertainment (general info, kids, music, some sports like ESPN)
200-299 News & Shopping
300-399 Premium Movies
400-499 Sports Events and Other Programs
500-572 Pay-Per-View and Sport Packages

580-899 International & DISH Latino
900s & 6000s Music (audio only)
7000-9399 Local Broadcasts (most locals can also be found between channels 1-99)
9400s Public Interest & HD Programs

Pausing a Program



Press the PAUSE button to freeze live or recorded programs. Press PAUSE again or PLAY to continue watching the program.



TIP: If you've paused or reversed in a live program, you can resume watching live TV without delay by pressing the VIEW TV button.



Digital Video Recording

Displays the list of shows you've recorded



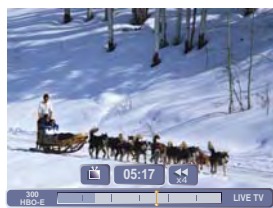
Skips back 10 seconds in a program



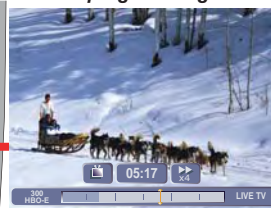
Skips ahead 30 seconds in a program



Note: you cannot skip forward or fast forward in Live TV programming

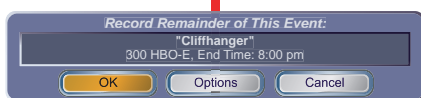


To fast reverse at 4 different speeds



To fast forward at 4 different speeds

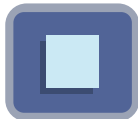
Displays recording choices



Stops playback or stops recording

Select OK or select OPTIONS for recording options available for the program you have selected

Starts playback of a program



Using the Recover Button

Use the Recover button to get back to watching satellite programming if you accidentally change channels or inputs on your TV

1



Press and hold the RECOVER button until all mode buttons light up.

2



If you see this System Information screen, proceed to step 4. Otherwise, continue to step 3.

3



Press the RECOVER button again & wait until the mode lights stop flashing. If you see the System Information screen, go to step 4. If not, repeat this step until you do.

4



Press the SELECT button (to choose Done).

Frequently Asked Questions



Why do I see a moving DISH Network logo on my TV screen?

Your receiver went into standby mode or has been turned off. Press the SELECT button on your remote control to bring back programming.



Why do I have a snowy picture (or a blue or black screen) on TV2?

Check to make sure your TV (and if connected, your VCR) is tuned to the correct channel. Unless changed, factory default for TV2 is channel 60. Refer to the "Watching Your Satellite Programs" section in this guide for correct channel setup or use the Recover button.



Why does my TV2 display a moving DISH Network logo that says "Shared view is currently disabled"?

Your satellite receiver is in "Single Mode" and "Shared View" is disabled. If you want to watch what TV1 is watching, simply enable the Shared View option. If you want to watch a program on TV2 that is different than what is being viewed on TV1, press the MODE button on the front of the satellite receiver to put it in Dual Mode. See your *User's Guide* for Shared View options.



Why doesn't my PIP button work?

You can only view Picture-In-Picture when in Single Mode. Press the MODE button on the front of your receiver so that the Single Mode light is on, then use the blue PICTURE-IN-PICTURE buttons as desired.



Why doesn't my remote control work?

- Try pressing the SAT Mode button.
- Check to make sure you are using the correct remote (TV1 or TV2) for the desired location.
- Your remote control batteries may need to be replaced.
- Check the remote address (see *User's Guide*).



Why does my receiver change channels and do things on its own?

You may have a neighbor that also has a UHF remote and their remote may be controlling your receiver. This is easily corrected by changing your remote control address. See your *User's Guide* for instructions.

Acquiring Satellite Signal Please Wait

Why does my satellite signal change from good to bad?

Check to see if there are any obstructions in front of your satellite dish. Sometimes new tree or plant growth can obstruct the signal between the satellite and the dish. If you are experiencing frequent signal interruptions, please contact DISH Network.



PHONE

Why does my satellite receiver have to be connected to a telephone line?

Keeping your phone line connected enables you to take advantage of interactive TV services, Customer Support Application, or Caller ID applications. It will also allow you to use your remote control to order Pay-Per-View events or movies. And, you will not be charged the \$4.99 Additional Outlet/Programming Access Fee.



Why do I lose programs I've recorded on my DVR?

If your DVR hard drive has reached its maximum capacity, new recordings will replace the oldest unprotected programs. To avoid losing a desired DVR recorded event, make sure to protect it when you set up the recording or when you select it from the DVR Events list.



(HD Models only) Why does my High Definition picture seem distorted?

You may need to adjust the format of the picture to match the program you are viewing. Press the Format (*) button on your remote to cycle through the available picture formats.

For further details on how to maximize enjoyment of your new DISH Network satellite receiver, see the DISH Player-DVR *User's Guide*.

To learn more about the great benefits of DISH Network, tune to DISH Network FYI Channel 101 or visit www.dishnetwork.com.